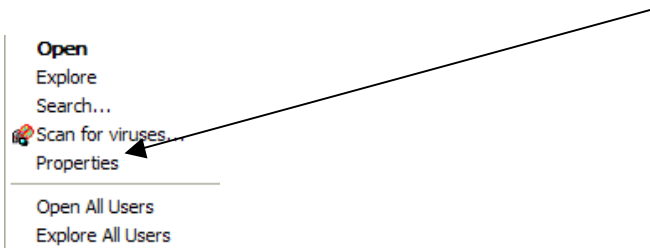


Adding a Program to start up with your computer

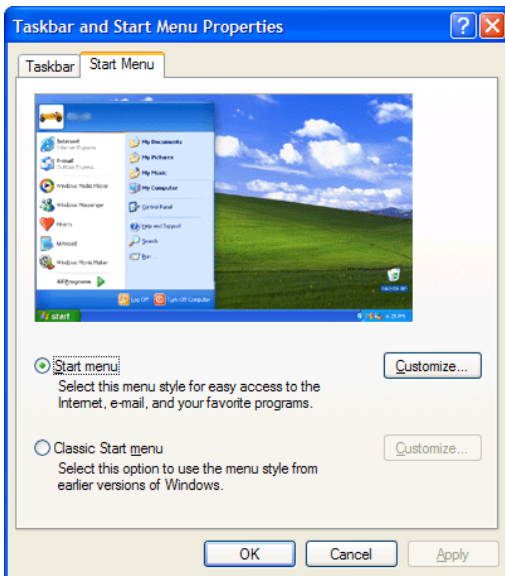
When you go on the computer do you always have the same routine, start the computer up then check your emails, or go onto the Internet. You can set a program to always open as soon as you turn on the computer.

To start a program each time you start Windows

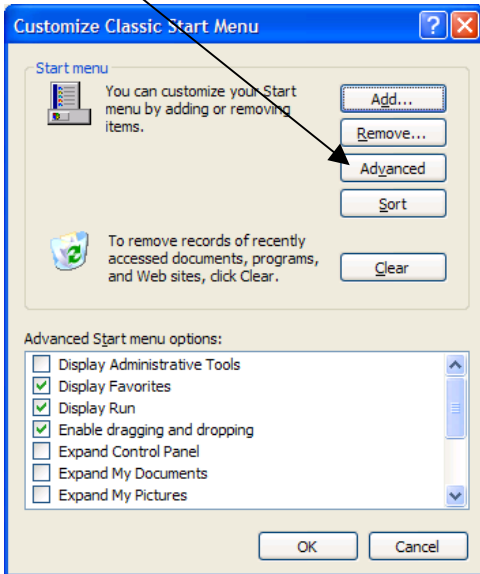
Right-click the **Start** button, and then click **Properties**.



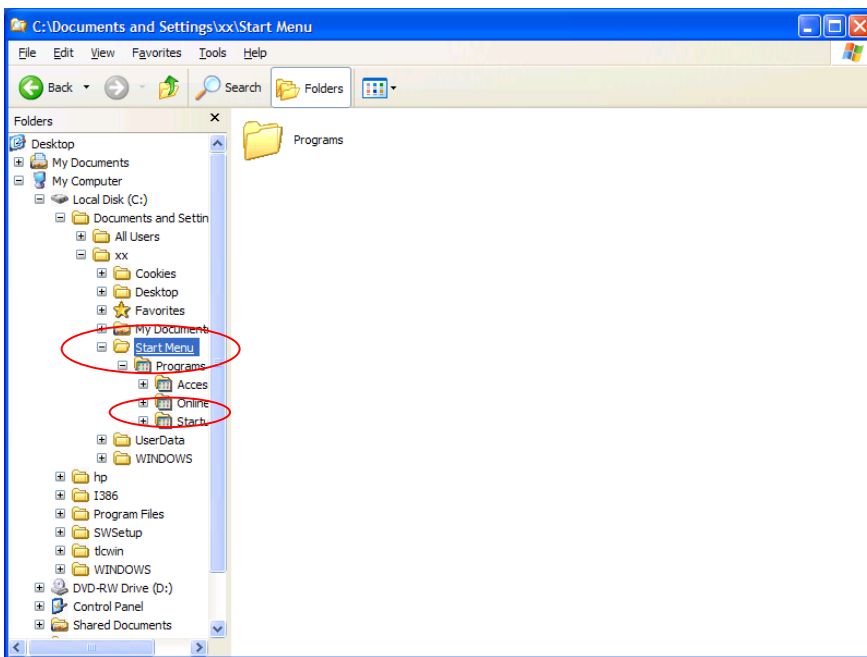
On the **Start Menu** tab, click **Classic Start menu**, and then click **Customize**. This changes the style of the **Start** menu.



Click **Advanced**.



The following box will appear:



In the Start Menu folder, find the shortcut to the program you want to start each time you start Windows, and drag it to the Startup folder located in the Programs folder.

Click on **OK** to close the open dialogue boxes.